



ARTracks Express

Winter 2009

Artrain USA

1100 N. Main St.
Suite 106
Ann Arbor, MI 48104

800-ART-1971

www.ArtrainUSA.org

info@ArtrainUSA.org

In This Issue

[President's Message](#)

[Support Artrain USA](#)

[Newcomers bolster
Artrain USA's home
office](#)

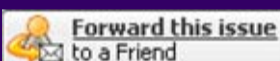
[Artrain USA board
begins new year with
changes to its lineup](#)

Quick Links

[DONATE NOW](#)

[Join Our Mailing List](#)

[More About Us](#)



[Join Our Mailing List!](#)

Kids' Craft Corner: 3-D Winter Scene

A great winter craft to use up all those Christmas cards is to let your kids cut out the pictures and make their own winter scenes!



What you'll need:

Blue construction paper

Christmas card or other print that can be cut up

White craft glue

Embellishments of choice (we used cotton balls, a pom pom and a craft jewel)

Scissors

How to make it:

Cut out the pieces of the Christmas card that you want to appear in your winter scene. We chose a snowman for ours.

Glue the picture(s) to your construction paper to create a new scene.

Embellish your scene with craft supplies. We added a pom pom to our snowman's hat and a craft jewel for the nose.

Add snow to your scene by opening a cotton ball and gluing strips to the ground. you can add snow in the sky by balling up small pieces of cotton ball and gluing to the construction paper.

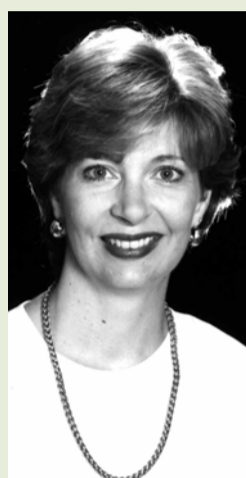
Tips:

You can purchase craft jewels in variety bags at your local craft supply store.

Embellishments can be anything your kids can think of. Try stickers, sand, glitter, pom poms, craft foam, etc.

Frame your winter scenes by adding a white or black construction paper border.

Artrain USA records record-smashing year of individual giving - all because of you!



From the staff and board of Artrain USA, I would like to extend a very big "thank you" to all those that made a contribution to our organization in 2008. Despite a faltering economy, the past calendar year was Artrain USA's most successful in terms of individual fundraising.

While most nonprofit organizations raise as much as 75% of their budgets from individuals, Artrain USA typically only raises 15%. Thanks to your support, Artrain USA smashed our previous record and raised 25%! Part of this success can be traced to the implementation of Artrain USA's "Connect and Grow" program. The goal of this program is to make and maintain meaningful connections with people who truly understand and value the mission of Artrain USA and to grow these connections into lifelong relationships. Many of you have attended one of our Connect and Grow introductory events or

Partners Express luncheons and showed your support for Artrain USA with a generous gift.

Rest assured that your gift to Artrain USA will continue to support the growth of the arts across our country as we move forward in the development of two fantastic exhibitions, including *America: Now + Here* which is being curated by the renowned Eric Fischl. In addition, we are hopeful of having final designs for our new mode of delivery and display - the aptly named Mobile Museum Units - very soon and will share them with you shortly thereafter.

It is wonderful to know that you care about Artrain USA and our mission of *enriching lives and building communities through the arts*. Here's to continuing the trend in 2009 and making an even bigger mark in the coming 12 months.

With best wishes for a great 2009,

Debra Polich
President/CEO

Support Artrain USA Make a Secure Online Donation Now

[CLICK HERE](#)

Newcomers bolster Artrain USA's home office

Over the past six months, Artrain USA welcomed a bevy of new staff members to its family, including LaQuana Jefferson, Richard Maurer, Melissa Swain and Biz Gonik.

LaQuana Jefferson, Artrain USA's administrative assistant, is currently majoring in Business Information Technology at Wayne Community College. She serves as the key administrative support person, managing general office administration and overseeing special projects, including technology.

Richard Maurer, named as Artrain USA's new finance manager and holder of a BBA in marketing/accounting from Eastern Michigan University (EMU), is responsible for the accounting and financial management of Artrain USA, including the preparation of budgets and financial statements.

Melissa Swain has been named to the position of sustainable giving and event manager. She is responsible for Artrain USA's Connect & Grow program as well as managing special projects and programs. She received a MA in Arts Management from EMU and a BM in Voice Performance from The University of Michigan.

Biz Gonik, Artrain USA's new community relations manager, received a BS in Communications & Arts Management from EMU. She is responsible for booking tours, community building programs and tour operations.

Artrain USA board begins new year with changes to its lineup

As the calendar changed from one year to the next, so to has the make-up of Artrain USA's Board of Directors.

Artrain USA extends a warm welcome to its 2009 executive board which includes Joan Mobley, chair; Brian Tolle, vice chair; Stephen Palms, secretary; Greg Rose, treasurer; Jacque H. Passino, immediate past chair and Deb Polich, president. Continuing in honorary roles are Helen W. Milliken as honorary chair and Maggie Allesee as honorary board member.

The board bids fond farewells to the long-serving Bert Althaver, who spent 34 years as a member of the Artrain USA family and to Mark Schlüssel (24 years) and John Marino (eight years).

The executive board would like to extend its thanks and gratitude to this trio for being a part of the Artrain USA family through thick and thin. Each remained steadfast in his dedication and direction which allowed Artrain USA to stay on the right track and prepare for a bright future as it makes the transition from rails to the open road.



proud recipient of the
**2006 National Medal for
Museum Service**
from the Institute of Museum &
Library Services



The Mobile Museum Authority - For almost 40 years, Artrain USA has developed and delivered world class art and education programs to under-resourced communities. Artrain USA's mobile facility is the only one of its kind designed to carry original artwork across the country. Winner of the National Medal for Museum Service, Artrain USA travels to communities across the United States fulfilling its mission to enrich lives and build communities through the arts. Since its founding in 1971, Artrain USA has traveled coast to coast, making 845 community visits and welcoming 3.2 million visitors.

Connecting People to Art - Artrain USA brings the museum experience to children and adults, often for the first time. It creates a surprising cultural experience, de-mystifying the world of art, fostering dialogues and helping young and old alike spark their own creativity.

Energizing Communities - Artrain USA brings diverse community groups together, providing guidance in regard to fundraising, organizing and promoting an exhibit. Artrain USA has fostered the creation of hundreds of arts programs and pride in their communities. A powerful catalyst, Artrain USA sparks the formation of local and regional arts councils, strengthens art education programs, builds community pride and spurs downtown revitalization efforts.